

# Zupčasti motori 3125 - standard Gear motors 3125 - standard

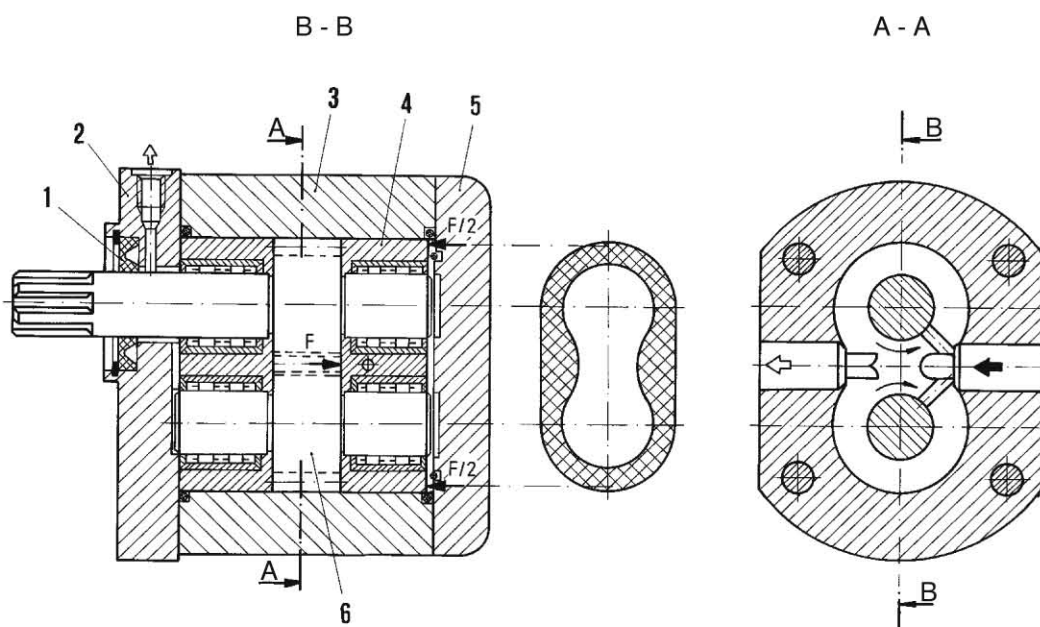
VISOKOG PRITISKA, SA SPOLJAŠNJIM OZUBLJENJEM  
HIGH PRESSURE, WITH OUTER GEARING

- Veliki obrtni moment
- Specijalno uležištenje zupčanika
- Jednostavna i robusna konstrukcija uz male gabarite
- Dobar učinak i u najtežim radnim uslovima
- Automatska regulacija aksijalnog zazora
- Dobar stepen korisnog dejstva, praktično nepromenljiv u deklarisanom području broja obrtaja i pritiska
- Motori su razvijeni na bazi familije zupčastih pumpi visokog

- High torque
- Special bearings
- Simple and robust construction, with small overall dimensions
- Satisfactory performance under the heaviest duties
- Automatic regulation of axial clearance
- High efficiency which is practically constant within the declared speed and pressure
- Hydraulic motors are developed on the basis of the high-pressure gear pump series and this is why these motors have a



## PRESEK - PRINCIP RADA SECTION - MODE OF OPERATION



1. Osovinska zaptivka
2. Prednji poklopac
3. Kućište
4. Ležišna čaura
5. Zadnji poklopac
6. Zupčasti par

1. Shaft seal
2. Front cover
3. Housing
4. Bearing socket
5. Rear cover
6. Couple of gears

**POGON**

Prenos obrtnog momenta obavlja se preko elastične spojnice. Radijalne i aksijalne sile nisu dozvoljene. Ako se prenos obrtnog momenta obavlja preko kaišnika ili zupčanika, neophodno je izabrati motor sa dodatnim ležajem u prednjem poklopcu.

**DRIVE ARRANGEMENTS**

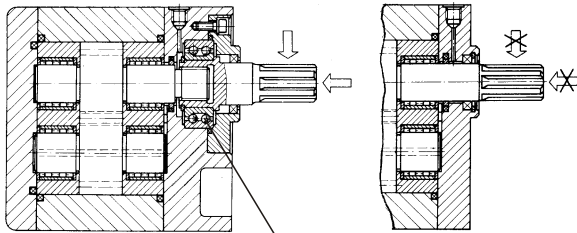
The torque is transferred by flexible coupling. There must be no radial or axial forces to the motor. When the torque is transferred by V-belt or gear wheel, driven is then must be motor with additional bearing in front cover (flange) chosen.

**SMER OBRTANJA**

Motori se isporučuju za rad u oba smera obrtanja (dvosmerni). Smer se određuje posmatranjem motora sa čela izlaznog vratila i označen je strelicom na prednjem poklopcu.

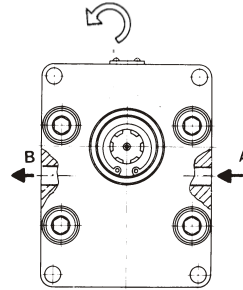
**DIRECTION OF ROTATION**

Clockwise or anticlockwise (looking on shaft). The pump may only be driven in the direction indicated. Direction of rotation is marked on the front cover.

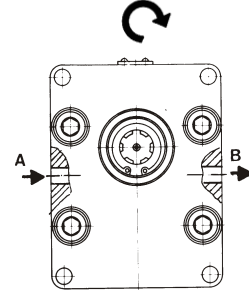


dodatni ležaj  
additional bearing

Levi smer / anticlockwise

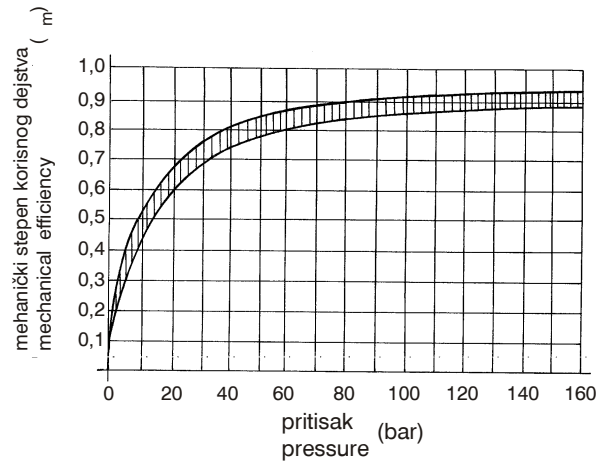
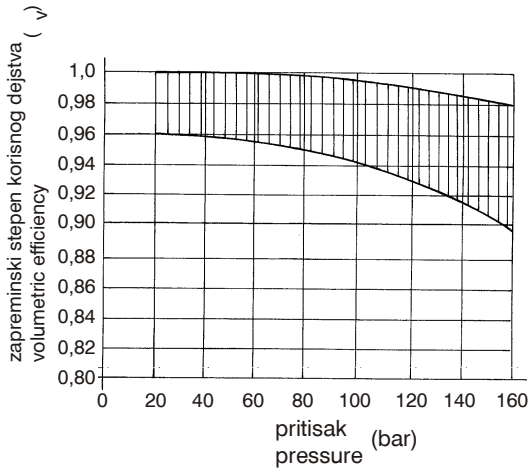


Desni smer / clockwise



**KARAKTERISTIČNI DIJAGRAMI** (za ulje viskoziteta 37mm<sup>2</sup>/s, 1500 o/min)

**CHARACTERISTIC DIAGRAMS** (for oil of 37mm<sup>2</sup>/s viscosity, speed 1500 rpm)



**TEHNIČKE KARAKTERISTIKE**  
**TECHNICAL DATA**

Simbol Symbol		
Smer obrtanja Rotation direction	levi i desni (dvosmerni) anticlockwise and clockwise (both-direction)	
Položaj ugradnje Mounting position	proizvoljan optional	
Temperatura okoline (°C) Ambient temperature	-20 ... +40	
Finoća filtriranja (µm) Filtering fineness	25 ... 150	
Pritisak u drenažnom vodu (bar) Drain line pressure	1	
Radna tečnost Working fluid	mineralno ulje mineral oil	optimalni; optimal: 16 ... 90 / kratko pri startu: intermittent for starting: 800
	viskozitet (mm <sup>2</sup> /s) viscosity	
	temperatura (°C) temperature	

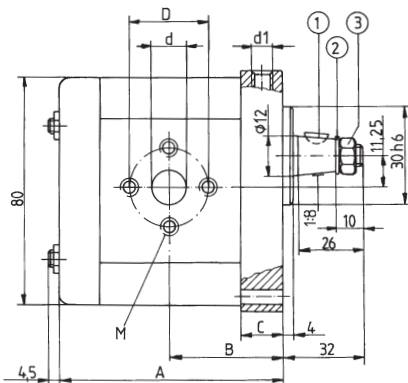
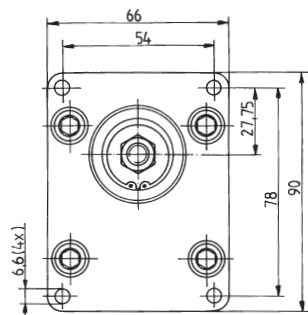
oznaka designation		radna zapremina displacement (cm <sup>3</sup> )	moment torque (at p=160 bar) (daNm)	pritisak pressure		broj obrtaja speed			masa mass (kg)
veličina size	dvosmerni both-direction			nom.	max	min	nom.	max	
				(bar)		(min <sup>-1</sup> ) (rpm)			
II	*	3125.471.33	1,66	160	200	750	1500	3500	1,0
	*	3125.472.33	2,66						1,1
	*	3125.473.33	4,20						1,25
III	**	3125.474.36	6,66			500	1500	3000	3,2
	**	3125.475.36	10,66						3,7
	**	3125.920.36	13,33						4,0
IV	*	3125.476.36	16,66			500	1500	2500	4,4
	*	3125.477.36	26,66						6,8
	*	3125.478.36	33,33						8,4
V	*	3125.479.27	42,0			500	1500	2000	13,5
	*	3125.480.27	53,33						14,0
	*	3125.481.27	66,66						16,95
VI	*	3125.482.27	83,33	21,19	19,0	20,0	19,0		
	*	3125.484.27	106,66				27,13		

- \* Motori sa igličastim ležajima  
Motors with the needle bearings
- \*\* Motori sa igličastim ležajima; kuglični ležaj u prednjem poklopcu  
Motors with the needle bearings; ball bearing in front cover

**UGRADNI CRTEŽ** (mere u mm)

**MOUNTING DRAWING** (dimensions in mm)

VELIČINA II / SIZE II



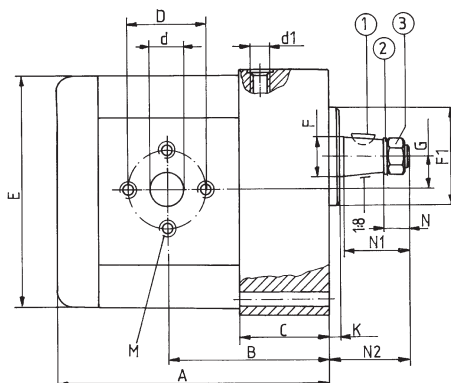
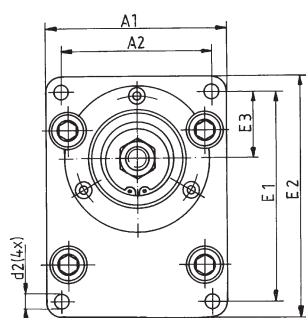
- ① klin key 3x5 JUS M.C2.050
- ② podloš. washer B8 JUS M.B2.110
- ③ navrtka nut M8 JUS M.B1.601

oznaka designation	rad. zapremina displacement (cm <sup>3</sup> )	A	B	C	drenaž drainage	ulaz (izlaz) inlet (outlet)		
					d1	ø d	ø D	M
3125.471.33	1,66	75,5	39,75	18	M12x1,5	7	26	M6/10
3125.472.33	2,66	78,5	41,25	18		8	26	
3125.473.33	4,20	83	43,5	18		10	28	

**B**

**UGRADNI CRTEŽ** (mere u mm)  
**MOUNTING DRAWING** (dimensions in mm)

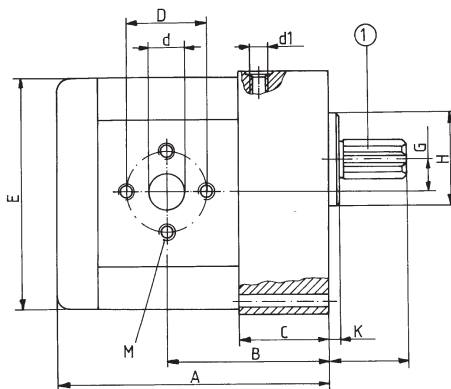
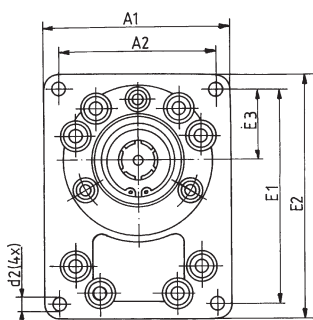
VELIČINA III, IV / SIZE III, IV



- ① klin 5x7,5 JUS M.C2.050  
 key  
 ② podloš. B16 JUS M.B2.110  
 washer  
 ③ navrtka M16 JUS M.B1.601  
 nut

oznaka designation	rad. zapremina displacement (cm <sup>3</sup> )	A	A1	A2	B	C	E	E1	E2	E3	F	F1	G	N	N1	N2	K	d2	ulaz (izlaz) inlet (outlet)			drenaž drainage
																			∅d	∅D	M	d1
3125.477.36	26,66	163	98	116	92,5	48	150	136	154	45,5	∅25	∅50h6	22,5	17	45	53	6	9	25	50	M10/18	M12x1,5
3125.478.36	33,33	168			97,5																	
3125.474.36	6,66	126			72																	
3125.475.36	10,66	132	92	78	75	40	116,5	104,5	118,5	36	∅18	∅40h6	16,25	13	35	41	5	9	12	30	M6/13	M12x1,5
3125.920.36	13,33	136			77														16	36	M8/16	
3125.476.36	16,66	141			79														20	40	M8/16	

VELIČINA V, VI / SIZE V, VI



- ① ozubljenje / toothing B6x23x28 DIN 5463 (SIZE V); B6x26x32 DIN 5463 (SIZE VI)

oznaka designation	rad. zapremina displacement (cm <sup>3</sup> )	A	A1	A2	B	C	E	E1	E2	E3	F	G	N	K	d2	ulaz (izlaz) inlet (outlet)			drenaž drainage			
																∅d	∅D	M	d1			
3125.479.27	42,0	192			111														25	50		
3125.480.27	53,33	198	140	120	114	55	181	160	181	52,5	∅60h6	27,5	63	8	11				32	62	M10/18	M14x1,5
3125.481.27	66,66	205			117,5																	
3125.482.27	83,33	208	160	134	121,5	65	218	192	218	63,5	∅70h6	32,5	66	8	14				40	72	M12/20	M14x1,5
3125.484.27	106,66	216			125,5																	